

# "N" BULKHEAD JACK-PLUG 230V 20kA SURGE ARRESTER

## T-DIP009

### CHARACTERISTICS

Interface dimensions in acc. to IEC 60169-16;CECC 122210

### MATERIAL AND FINISHINGS

Body	Brass-ternary alloy plated
Jack side	Spring bronze-gold plated
Plug side	Brass-gold plated
Insulator	PTFE
Other metal parts	Brass-ternary alloy plated
Gasket	Silicone rubber

### ELECTRICAL

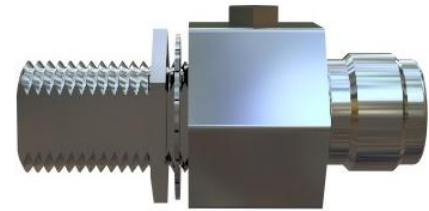
Impedance	50 Ω
Frequency range	DC-2.5 GHz
V.S.W.R.	<1.10 (26.4dB) DC-2.5GHz
Insertion loss	< 0.1dB DC-1GHz
Insulation resistance	> 5 GΩ
Center contact resistance	<1 mΩ
Outer contact resistance	<0.25 mΩ
DC sparkover voltage	230V
Nominal impulse discharge current	20KA,wave 8/20μs
Rated discharge current	20A
Nominal AC-Sparkover-Voltage	<700V

### MECHANICAL

Coupling nut proof torque	1.7Nm
Recommended coupling nut torque	0.7Nm to 1.1Nm
Coupling nut retention	> 450N
Matis cycles	>500
Lenght	mm.62

### ENVIRONMENTAL

Operating temperature	-40°C / +90°C
Thermal shock	as per CECC 122210 clause 4.6.7
Corrosion (salt mist)	as per CECC 122210 clause 4.6.10
Vibration	as per CECC 122210 clause 4.6.3
Shock	as per CECC 122210 clause 4.6.4.
Protection degree(mated pair)	IP68(0.1bar,24h at 20°C) acc.to spec. CEI EN60529



PANEL CUTOUT DIMENSIONS

