

DIRECTIVE W-LAN ANTENNA

T-AT873

SPECIFICATIONS

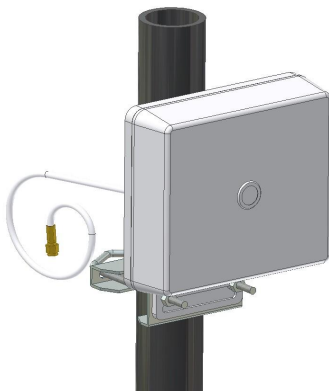
| | |
|--------------------|----------------------|
| Material | ABS |
| Colour | Gray |
| Dimensions (mm) | 162*142*45 |
| Wind resistance | 120 Km/h |
| Mounting (mm) | On pale (from Ø20) |
| Temperature (°C) | -30° - +80° |



TECHNICAL DATA WIRELESS LAN

| | |
|--------------------|-------------------|
| Antenna type | Directive Antenna |
| Frequency range | 2400 ÷ 2485 MHz |
| Impedance (Ohms) | 50 |
| Max power (W) | 50 |
| V.S.W.R. | Less than 2.0 |
| Polarization | Vertical |
| Emission | Directive |
| Gain (dBi) | 9 |
| Connector | "N" f. |

PALE MOUNTING



WALL MOUNTING

