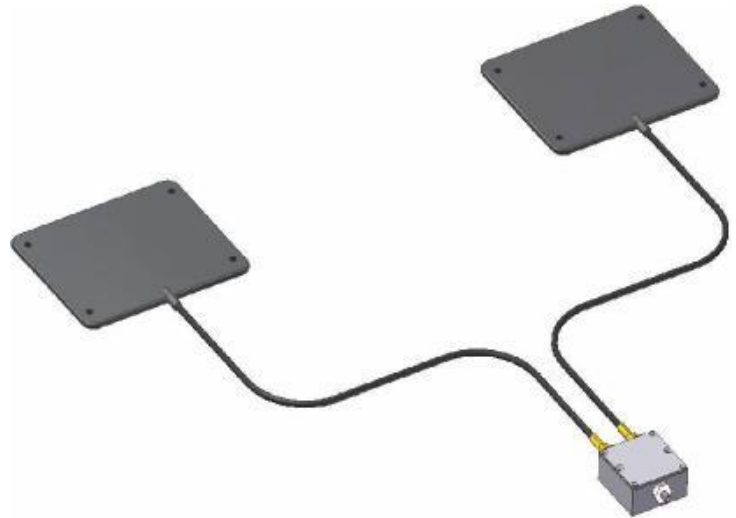


TETRA ANTENNAS 380-430 MHz WITH COMBINER

T-AT261.01

SPECIFICATIONS:

Material	Polyester elastomer
Colour	Black
Net weight (g)	350 (single antenna)
Dimensions (mm)	140x110x5
Temperature (°C)	-40° - +80°
Mounting	Behind bumper of vehicle



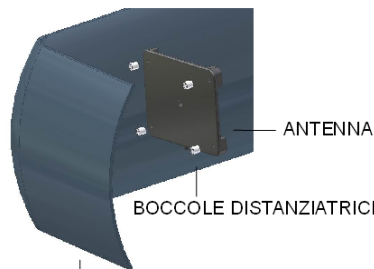
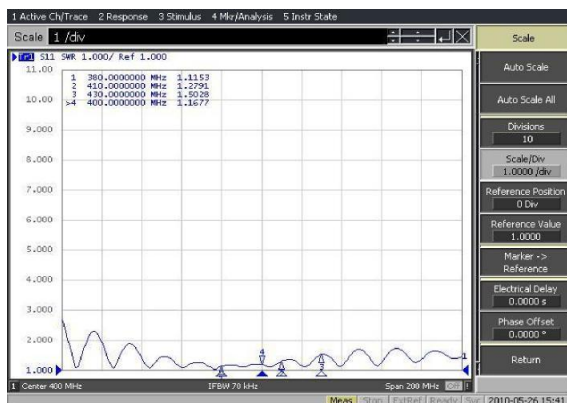
LOSS DIPLEXER



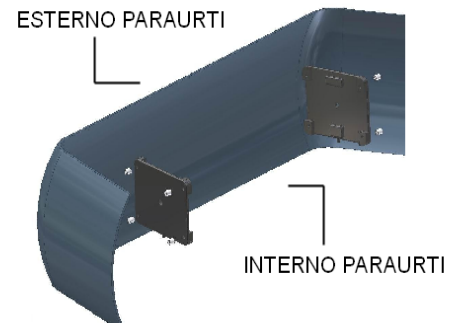
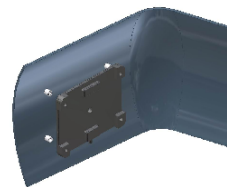
TECHNICAL DATA TETRA 380÷430 MHz

Antenna type	Loop Antenna
Impedance (Ohms)	50
System max power (W)	10
V.S.W.R.	< 2 see "CURVE"
Gain (dBi)	2.14
Bandwidth	50MHz
2 cables antenna	5000mm with SMA M.
Extension cable	3000mm with TNC M./SMA M.

REFLECTION OF THE SYSTEM



IL PARAURTI NON DEVE ESSERE METALLICO O METALLIZZATO



IL FUNZIONAMENTO IDEALE DEL SISTEMA SI OTTIENE CON ENTRAMBE LE ANTENNE MONTATE