

OMNIDIRECTIONAL ANTENNA GPS / 380-430 MHz 4dBi

T-OD380/430.04.MIL

ELECTRICAL SPECIFICATIONS

| | |
|-------------------|---|
| Frequency range | 380-430 MHz |
| VSWR | Less than 2.0 |
| Impedance | 50 Ohm |
| Power rating | 50W CW |
| Gain | 4 dBi |
| Radiation pattern | Azimuth: Omnidirectional Elevation : See diagram |
| Polarizaion | Vertical |
| Connector | To be specified together with base |

GPS SPECIFICATIONS

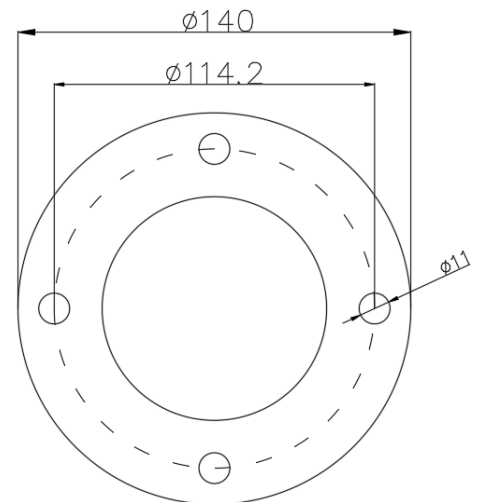
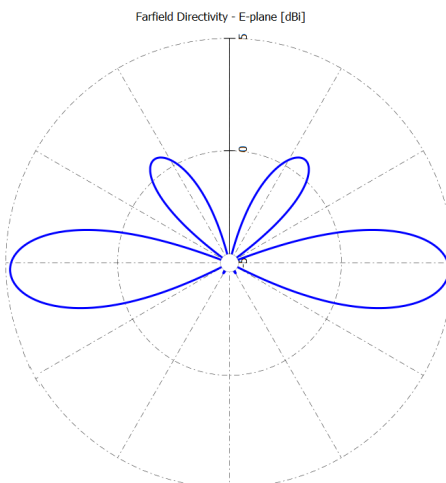
| | |
|-------------------|--|
| Frequency range | L1 : 1575.42 ± 10MHz L2 : 1227.00 ± 10MHz |
| Preamplifier gain | 26 ± 2 dB |
| Noise figure | 2.5 dB |
| Supply voltage | 2.7-5.5 V. |
| Supply current | <60mA |
| Temperature range | -55°C, +71°C |
| Mechanical design | Spring base made from stainless steel, brass, aluminium, and GRP. |
| Height base | 240mm |
| Base Weight | 2.5Kg |

MECHANICAL SPECIFICATIONS

| | |
|-------------------|--|
| Design | Dual dipoles. Radiating element completely enclosed in epoxy/ fiberglass laminate. Metal parts are brass and staninless steel |
| Lenght | 1.25 mt, whit spring base |
| Weight | 2Kg, exlused base |
| Wind rating | 55m/s = 125 mph |
| Finish | Polyurethane lacquer, olive drab. |
| Temperature range | -55 °C, +71°C; -67 °F, +160 °F |



Standard 4 hole NATO flange, with conducting gasket, or strap for grounding.



Atel-Antennas S.r.l.

Viale Caduti sul Lavoro, 21/A - 15061 Arquata Scrivia (AL) - Italy

Tel. +39 0143 635496 - Fax +39 0143 666423 - Website: www.atel-antennas.eu - Mail: commerciale@atel-antennas.eu - P. IVA 02442250060