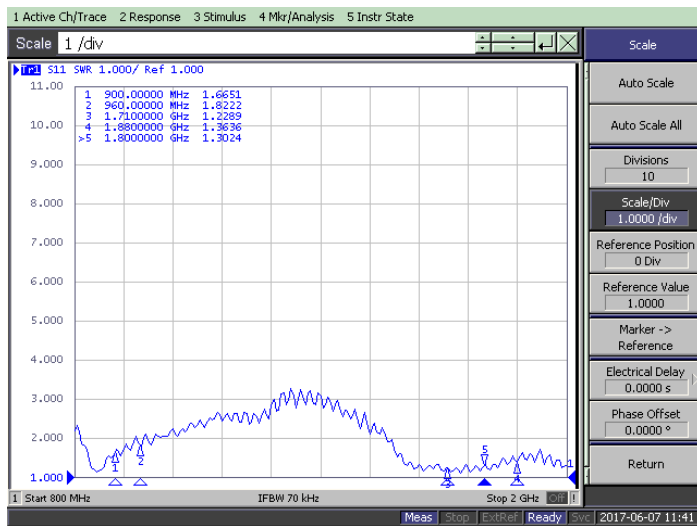
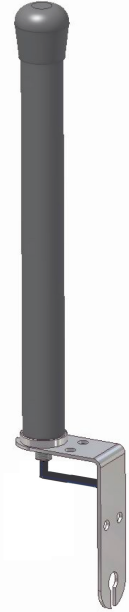


OMNIDIRECTIONAL GSM-UMTS ANTENNA

T-AT466.17

SPECIFICATIONS

Material	PVC
Colour	Grey RAL7024
Weight (g)	400
Dimensions (mm)	250 * Ø25
Temperature (°C)	-30° - +80°



TECHNICAL DATA TELEPHONE

Antenna type	1/4 l Mobile Antenna
Frequency range	824 ÷ 960 MHz
GSM EUROPA / USA	1710 ÷ 1880 MHz
DCS-PCS EUROPA / USA	1920 ÷ 1990 MHz (uplink tr.)
UMTS	2110 ÷ 2170 MHz (downlink ric.)
	1900 ÷ 1920 MHz (uplink tr.)
	2010 ÷ 2025 MHz (downlink ric.)
Impedance (Ohms)	50
Max power (W)	25
V.S.W.R.	824 ÷ 960 less than 2.0
	1710 ÷ 1990 less than 1.5
	1900 ÷ 2170 less than 2.0
Beamwidth horizontal	H plane omnidirectional 360°
Beamwidth vertical	E plane 50°
Polarization	Vertical
Emission	Omnidirectional
Gain (dBi)	2.14
Cable	CO100B mm. 7500
Connector	FME f.