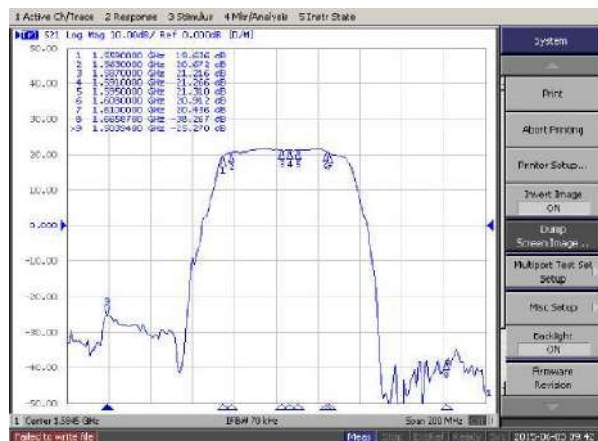
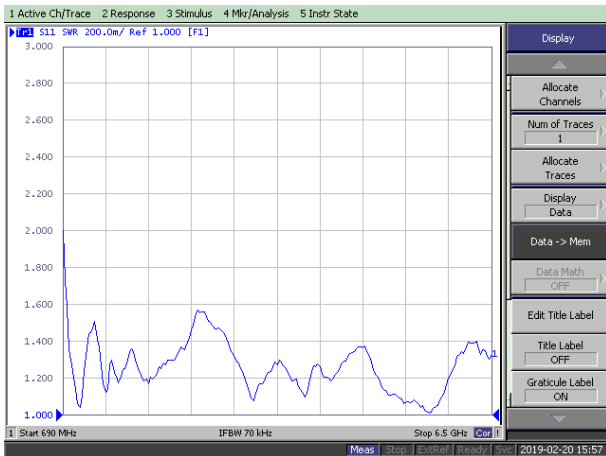


2G-3G-4G / WiFi 2.4-5 GHz / GPS-GNSS RAILWAY ANTENNA A-RW002

MECHANICAL DATA

Material	
Base	Aluminium alloy EN AW-6082 with Surtec650
Radome	ASA
Colour	RAL7043 (Dark Grey)
Weight (g)	1000 about
Dimensions (mm)	100x256x105 (widht-lenght-height)
Operating Temperature (°C)	-45° / +85°
Storage Temperatura (°C)	-45° / +85°
IP class	IP68
Mounting	Rooftop



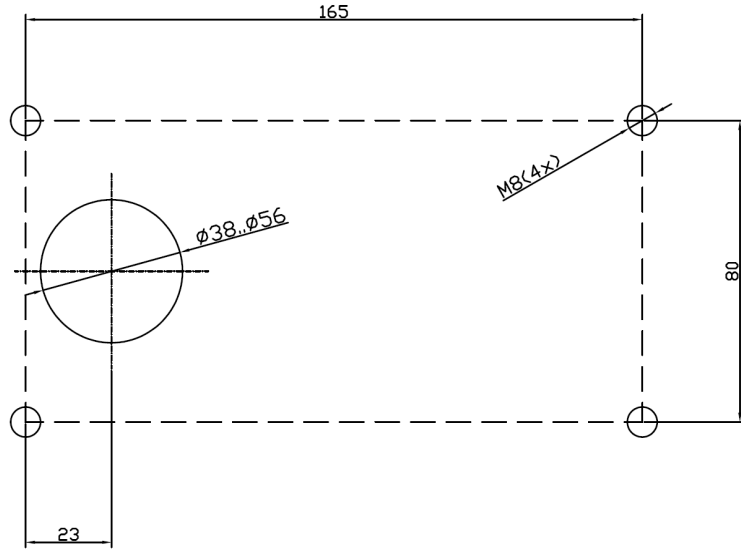
TECHICAL DATA

Frequency Range	690 ÷ 790 MHz 790 ÷ 960 MHz 1710 ÷ 2700 MHz 3300 ÷ 4900 MHz 4900 ÷ 6425 MHz
Impedance (Ohm)	50
Gain (dBi)	5 - 690 ÷ 790 MHz 5 - 790 ÷ 960 MHz 6 - 1710 ÷ 2700 MHz 8 - 3300 ÷ 4900 MHz 7.5 - 4900 ÷ 6425 MHz
Max Power (W)	800
V.S.W.R.	< 2.0
Polarization	Vertical
Connector	"N" F.
DC GROUNDED	

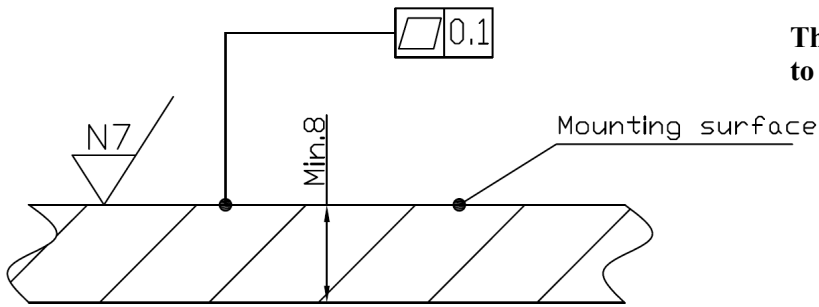
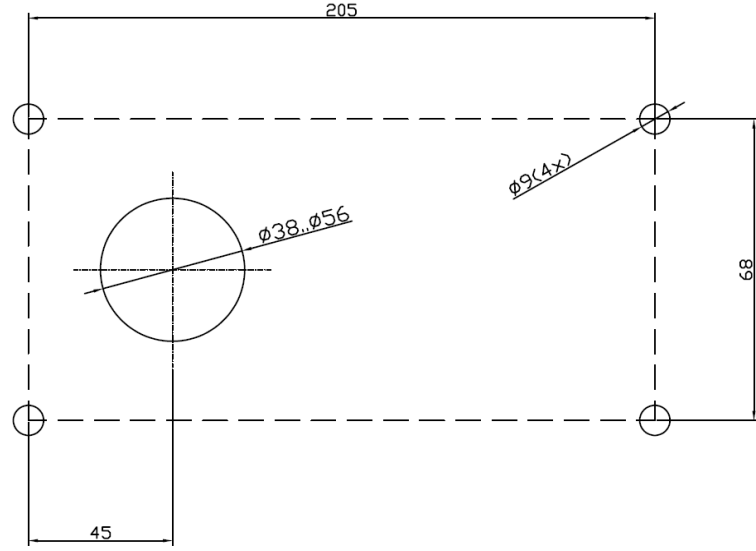
TECHNICAL DATA GPS/GNSS/GALILEO

Antenna type	Active Planar Patch Antenna
Center frequency	1580 MHz
Bandwidth	± 28MHz
V.S.W.R.	Less than 2.0
Impedance (Ohms)	50
Polarization	RHCP
Supply voltage	2.7 ÷ 5.1 V
Current absorption	10 ± 1 mA at 2.7 V. 16 ± 1 mA at 5.0 V.
Gain amplifier	18 ± 1 dB at 2.7 V. 22 ± 1 dB at 5.0 V.
Gain patch antenna	2 dB
Noise figure	1.7 ÷ 2.1 dB
Temperature (°C)	-30° - + 80°
Cable lenght	RG 316D mm.180±20
Connector	TNC m.

Drilling of threaded hole for top side mounting



Drilling of boreholes for bottom side mounting



The area of the roof where the antenna is mounted has to be planar and stable.