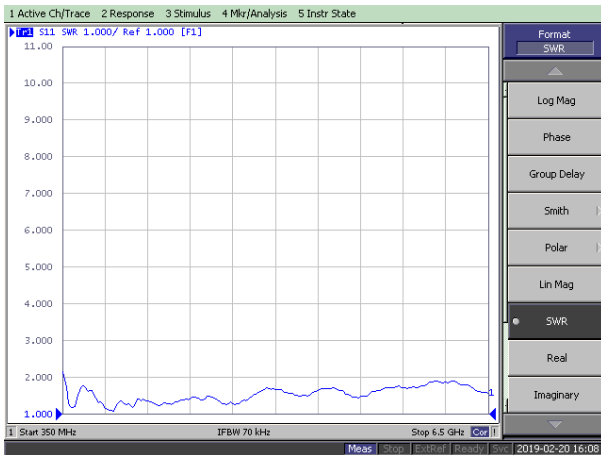


# TETRA-DVB-T / 2G-3G-4G / WiFi 2.4-5 GHz / GPS-GNSS RAILWAY ANTENNA A-RW001

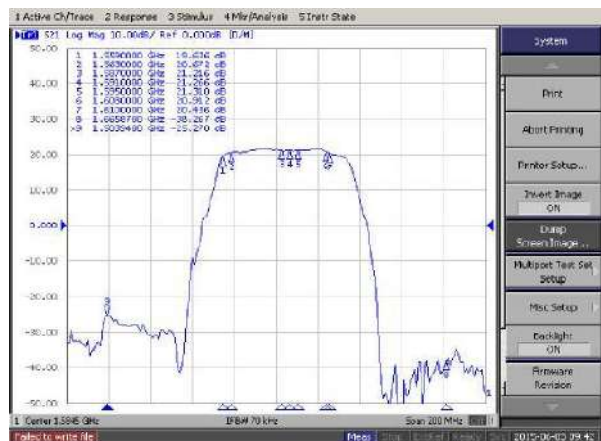
## MECHANICAL DATA

Material	
Base	Aluminium alloy EN AW-6082 with Surtec650
Radome	ASA
Colour	RAL7043 (Dark Grey)
Weight ( g )	1500 about
Dimensions ( mm )	100x256x160 (width-length-height)
Operating Temperature ( °C )	-45° / +85°
Storage Temperature (°C)	-45° / +85°
IP class	IP68
Mounting	Rooftop



## TECHICAL DATA

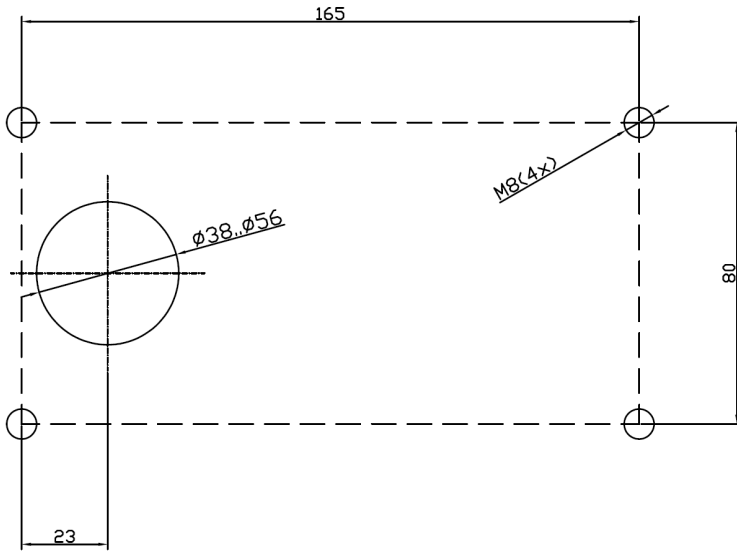
Frequency Range	380 ÷ 690 MHz 690 ÷ 790 MHz 790 ÷ 960 MHz 1710 ÷ 2700 MHz 3300 ÷ 4900 MHz 4900 ÷ 6425 MHz
Impedance (Ohm)	50
Gain (dBi)	3 - 380 ÷ 690 MHz 5 - 690 ÷ 790 MHz 5 - 790 ÷ 960 MHz 6 - 1710 ÷ 2700 MHz 8 - 3300 ÷ 4900 MHz 7.5 - 4900 ÷ 6425 MHz
Max Power (W)	800
V.S.W.R.	< 2.0
Polarization	Vertical
Connector	"N"F.
DC GROUNDED	



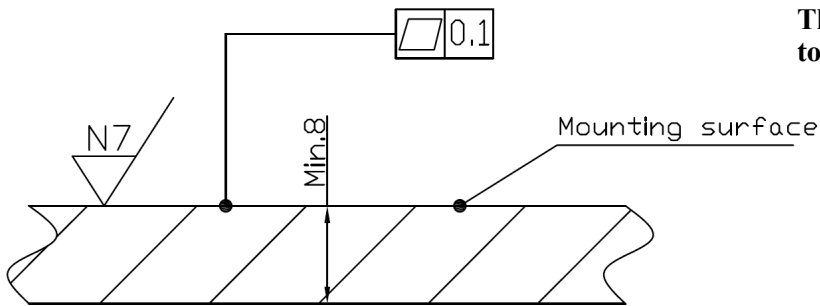
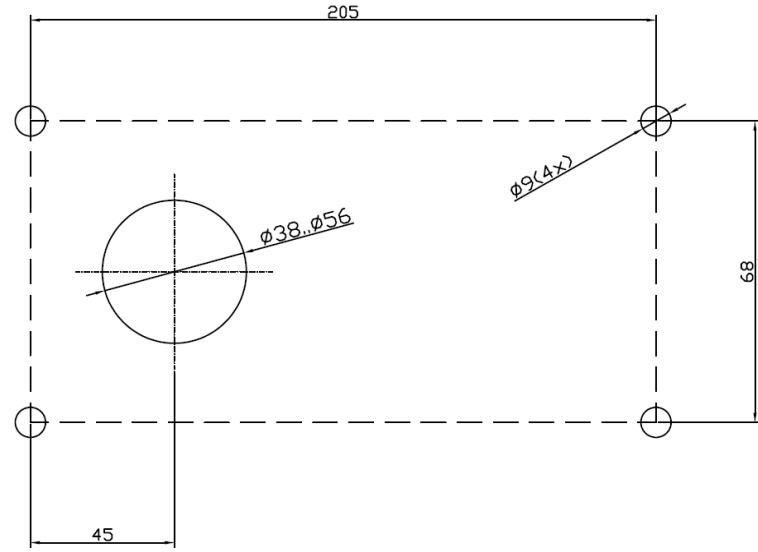
## TECHNICAL DATA GPS/GNSS/GALILEO

Antenna type	Active Planar Patch Antenna
Center frequency	1580 MHz
Bandwidth	± 28MHz
V.S.W.R	Less than 2.0
Impedance ( Ohms )	50
Polarization	RHCP
Supply voltage	2.7 ÷ 5.1 V
Current absorption	10 ± 1 mA at 2.7 V. 16 ± 1 mA at 5.0 V.
Gain amplifier	18 ± 1 dB at 2.7 V. 22 ± 1 dB at 5.0 V.
Gain patch antenna	2 dB
Noise figure	1.7 ÷ 2.1 dB
Temperature ( °C )	-30° - + 80°
Cable lenght	RG 316D mm.180±20
Connector	TNC m.

### Drilling of threaded hole for top side mounting



### Drilling of boreholes for bottom side mounting



**The area of the roof where the antenna is mounted has to be planar and stable.**