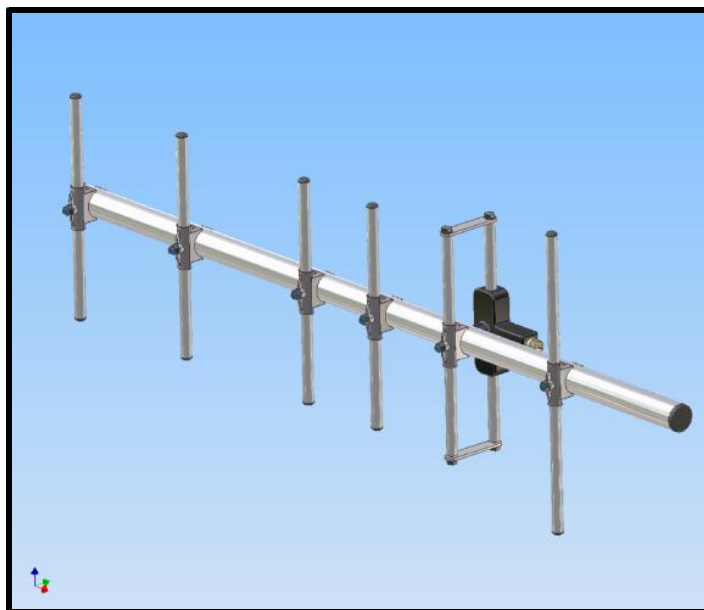


Type n° T-DY06.400/430

YAGI ANTENNA 6 ELEMENTS: 400/430 MHz

TECHNICAL SPECIFICATIONS



Elements number:	6
Impedance (Ohms):	50
Frequency range:	400 ÷ 430 MHz
V.S.W.R:	less than 1.5
Beamwidth -3 dB:	See "RADIATION CURVE"
Polarization:	Vertical or Horizontal
Connector:	N-female
Front to Back ratio:	more than 15 dB
Mounting:	on masts from 33 to 60 mm diam.
Gain (dBi):	10
Max power (W):	150
Wind resistance:	160 Km/h
Temperature (°C):	-40° - +85°
Dimensions (mm):	380 x 1215
Net weight (g):	2700
Material	
Boom:	Aluminium alloy EN AW-6082
Elements:	Aluminium alloy EN AW-6060
Screws and nuts:	Stainless steel
Treatment:	Phospho-chromium plating (in specification RoHS)

DEVICE EQUIPPED WITH A DC GROUNDED SYSTEM AND CONDENSING HOLE

