

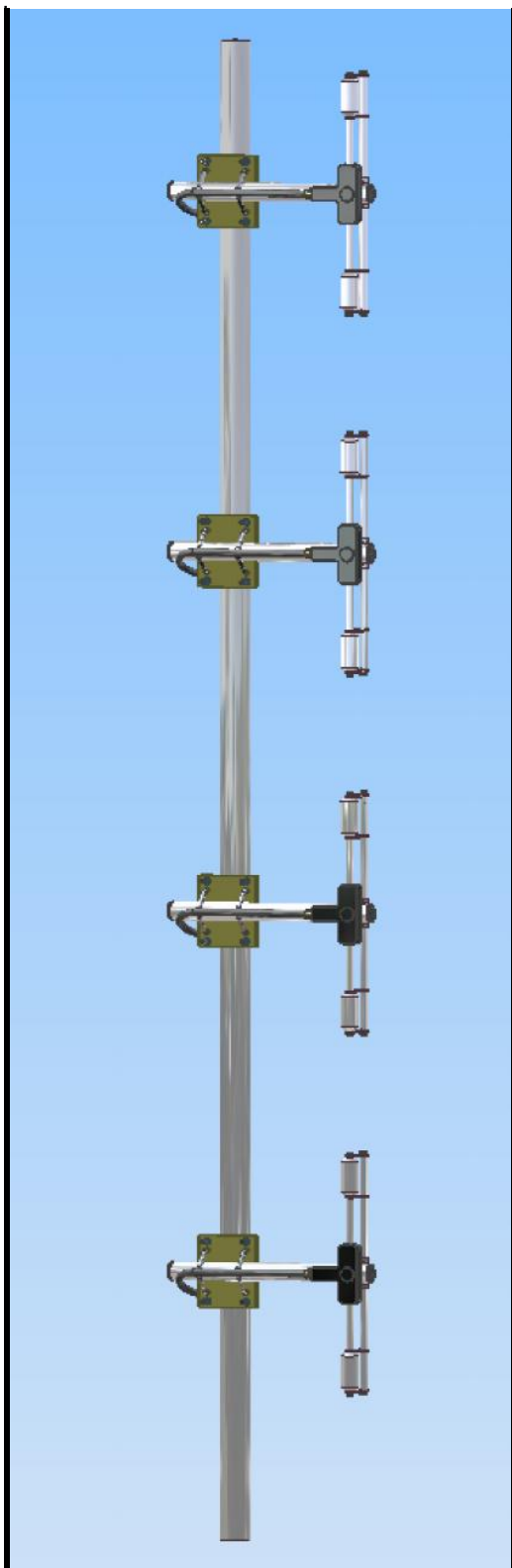
Type n° T-DA04.380/430.T5

SYSTEM ARRAY FOUR FOLDED DIPOLES 380 ÷ 430 MHz WITH TILT -5°

TECHNICAL SPECIFICATIONS:

Impedance (Ohms):	50
Frequency range:	380 ÷ 430 MHz
V.S.W.R.:	less than 1.8
Beamwidth -3 dB:	See "RADIATION PATTERN CURVE"
Electrical tilt:	-5°
Polarization:	Vertical
Connector:	N-female
Mounting:	on masts from 33 to 60 mm diam.
Gain (dBi):	9.5
Max power (W):	500
Wind resistance:	160 Km/h
Temperature (°C):	-40° - +85°
Dimensions (mm):	2700
Net weight (g):	12000
Material	
Boom:	Aluminium alloy EN AW-6082
Elements:	Aluminium alloy EN AW-6060
Screws and nuts:	Stainless steel
Treatment:	Phospho-chromium plating (in specification RoHS)

DEVICE EQUIPPED WITH A DC GROUNDED SYSTEM AND CONDENSING HOLE



V.S.W.R.

